



NETOP®

RemoteControl

Secure Remote Management and Support

31 January 2017

Copyright© 1981-2017 Netop Business Solutions A/S. All Rights Reserved.

Portions used under license from third parties.

Please send any comments to:

Netop Business Solutions A/S

Bregnerodvej 127

DK-3460 Birkerød

Denmark

E-mail: info@netop.com

Internet: www.netop.com

Netop™ is a trademark of Netop Business Solutions A/S. All other products mentioned in this document are trademarks of their respective manufacturers. Netop Business Solutions A/S denies any and all responsibility for damages caused directly or indirectly as a result of using this document. The content of this document is subject to change without notice. Netop Business Solutions A/S retains the copyright to this document.

The document is optimized for double-sided printing.

Contents

1 Netop Pack'n Deploy	2
1.1 Install	2
1.2 Load	4
1.2.1 Menu Bar	5
1.3 Pack	5
1.3.1 MSI Tab	6
1.3.2 Properties Tab	7
1.3.3 Features Tab	10
1.3.4 Configuration Tab	11
1.3.5 Shortcut Tab	12
1.3.6 Advanced Tab	13
1.3.6.1 Advanced Files Tab	14
1.3.6.2 Advanced Add Files Tab	15
1.3.6.3 Advanced INI Settings Tab	16
1.3.6.4 Advanced Registry Tab	17
1.3.7 Build Tab	19
1.4 Deploy	20
1.5 Silent Install	21
Index.....	22

1 Netop Pack'n Deploy

Netop Pack'n Deploy enables you to create a customized **Netop Remote Control** or **Netop School** module setup ([Pack](#)) and install the module in this customized setup on multiple remote computers ([Deploy](#)) or silently on a local computer ([Silent](#)).

It is a complementary Netop product that is available for free to **Netop Remote Control** and **Netop School** users.

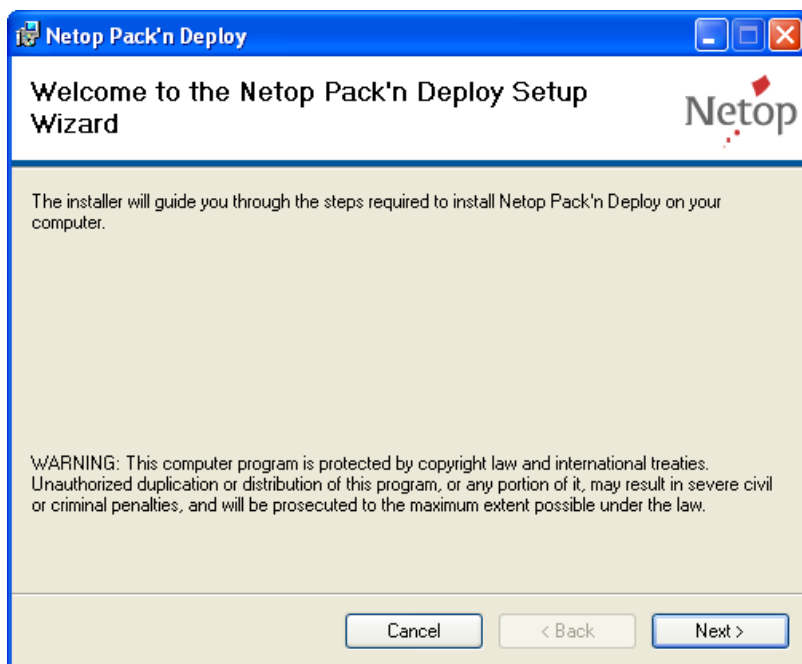
This section includes these sections:

- [Install](#)
- [Load](#)
- [Pack](#)
- [Deploy](#)
- [Silent Install](#)

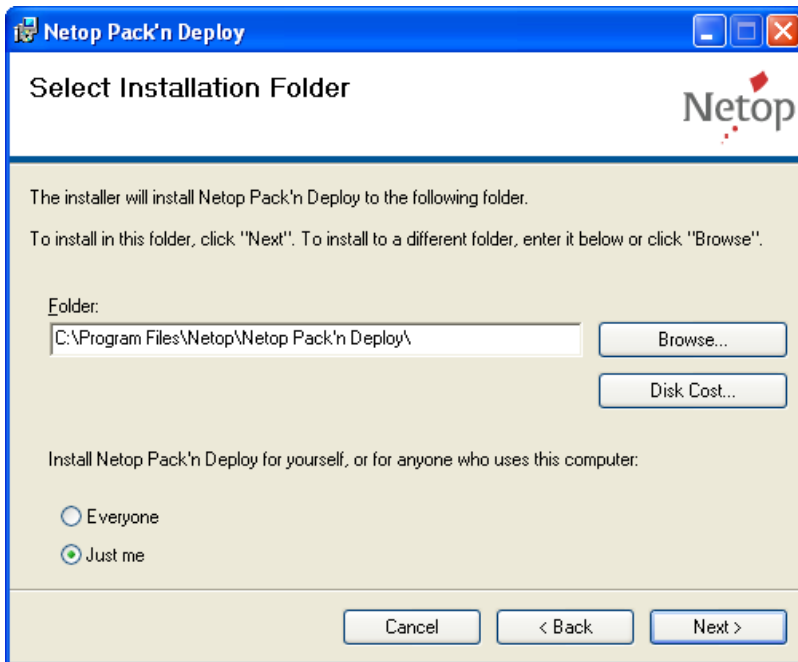
1.1 Install

You can download the **Netop Pack'n Deploy** installation file `PacknDeploy.msi` from the [Netop KnowledgeBase](#), select **Download Products** > **Netop Pack'n Deploy**. We recommend that you save `PacknDeploy.msi` on your computer desktop to install from it.

To install **Netop Pack'n Deploy**, run (double-click) `PacknDeploy.msi`. The Netop Pack'n Deploy wizard will be displayed:



Click **Next**.



Folder: Will show the destination directory path (default: `C:\Program Files\Netop\Netop Pack'n Deploy\`) that you can edit.

Browse: Click to show the Windows **Browse for Folder** window to select a destination directory, the path of which will be shown in the **Folder** field.

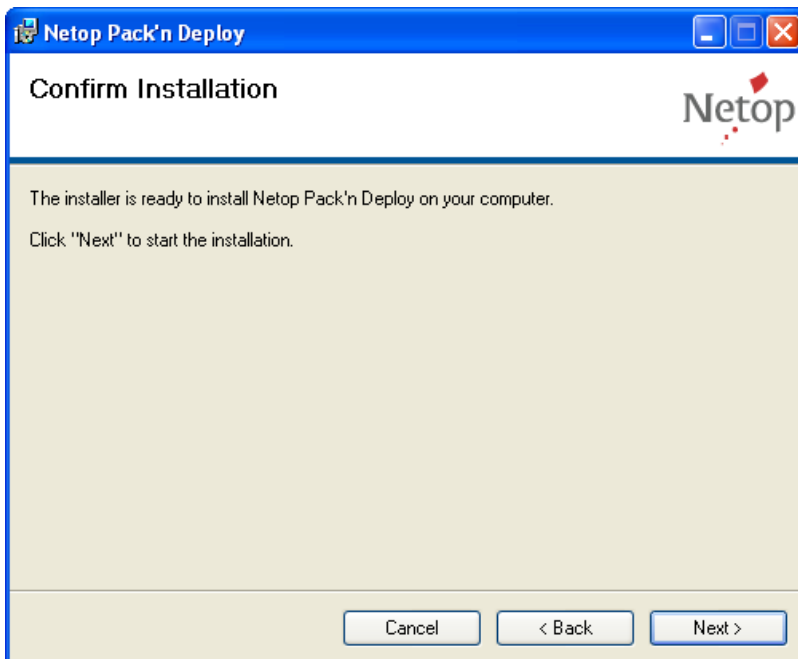
Disk Cost: Click to show the **Netop Pack'n Deploy Disk Space** window that will show available and required disk space on your computer disk drives.

Select one of these options:

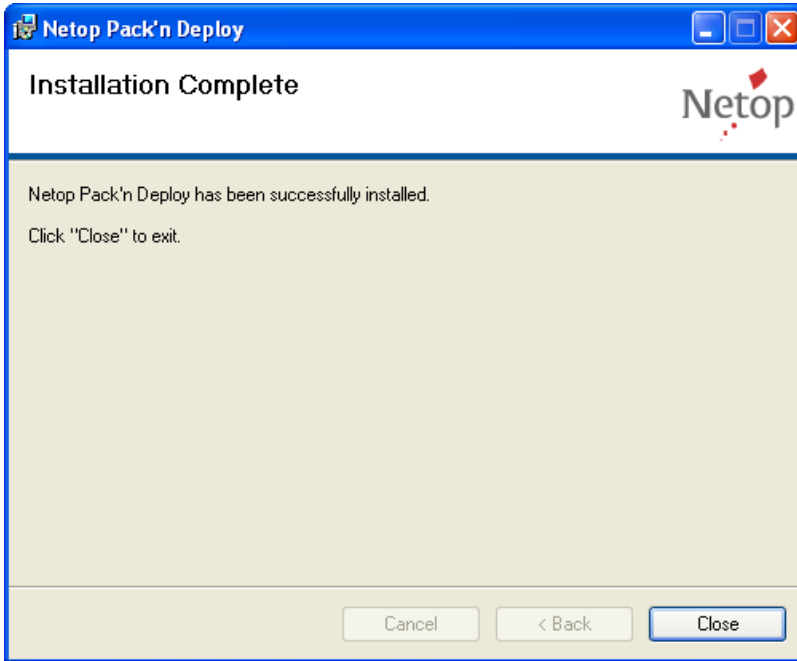
Everyone: Make **Netop Pack'n Deploy** available to any user logged on to Windows on the computer.

Just Me: Make **Netop Pack'n Deploy** available only to the user logged on to Windows on the computer during installation (default selection).

Click **Next**.



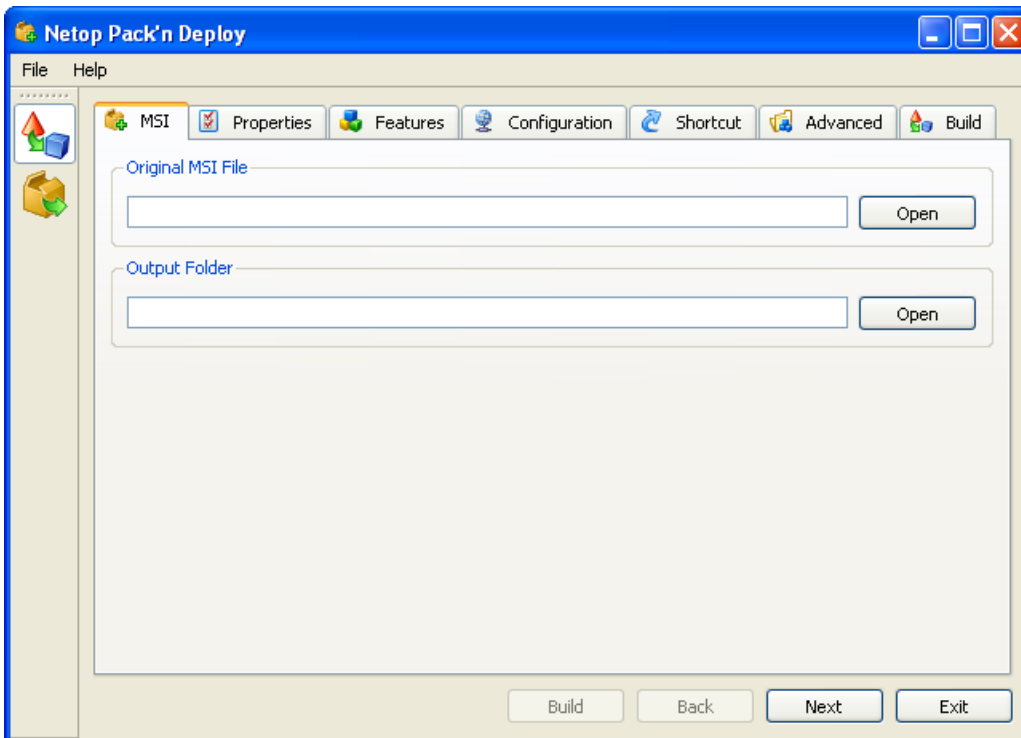
Click **Next** to start installation.



Click **Close** to close the window.

1.2 Load

Assuming that you [installed Netop Pack'n Deploy](#) in the suggested destination directory, click **Start > All Programs > Netop Remote Control > Pack'n Deploy** :



Alternatively, in the selected destination directory, run (double-click) `packndeploy.exe`.

It contains below a [Menu Bar](#) a left selection bar and a right work panel.

The selection bar contains these buttons:



Pack: Click to show [Pack](#) elements in the right work panel to enable creating a customized Netop module setup.



Deploy: Click to show [Deploy](#) elements in the right work panel to enable deploying a customized setup Netop module.

1.2.1 Menu Bar

This is the **Netop Pack'n Deploy** menu bar:



It contains these menus:



Exit Alt+F4: Select or press ALT+F4 to close the window and unload [Netop Pack'n Deploy](#).

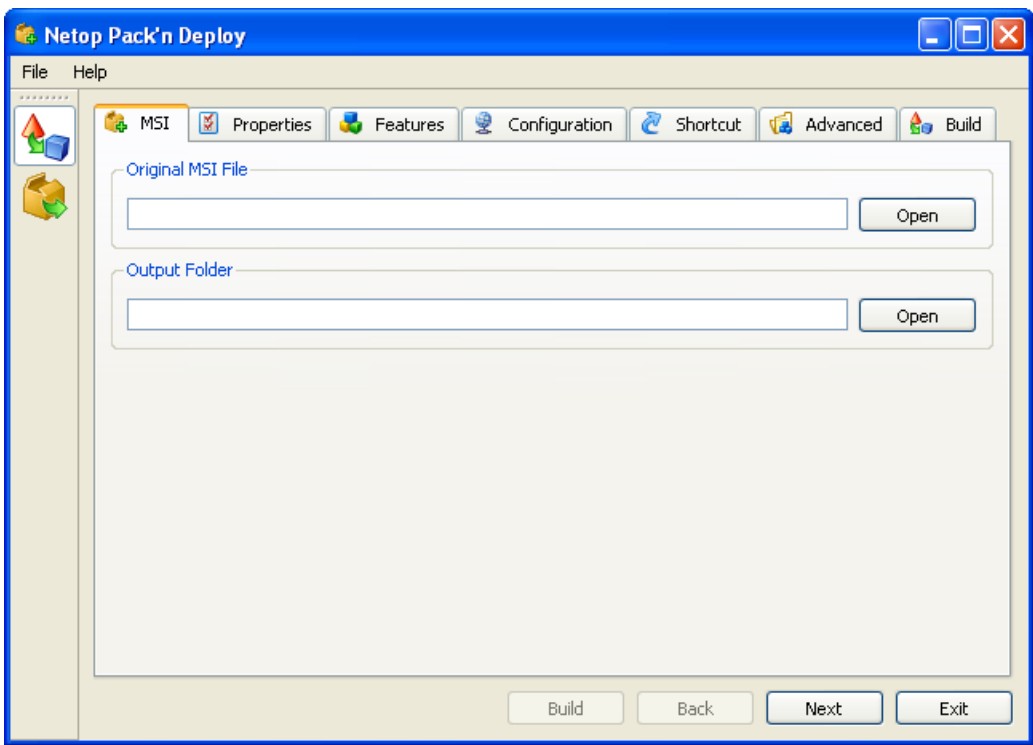


Help F1: Select or press F1 to open the **Netop Pack'n Deploy Help** system.

About: Select this command to see [Netop Pack'n Deploy](#) version and build number that you will be asked for if you request [Netop support](#).

1.3 Pack

Click the [Netop Pack'n Deploy](#) window left selection bar **Pack** button to show these window contents:



The right work panel will contain these customized Netop module setup tabs:

- [MSI](#)
- [Properties](#)
- [Features](#)
- [Configuration](#)
- [Shortcut](#)
- [Advanced](#)

- [Build](#)

and these buttons:

Build: Will become enabled when a customized module setup has been specified on the tabs. Click it to create customized setup installation files.

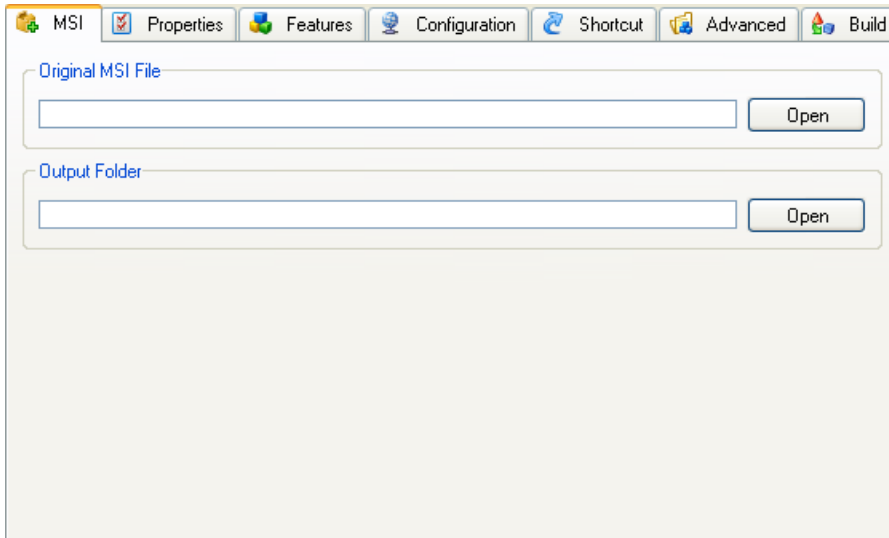
Back: Click to show the tab to the left of the shown tab.

Next: Click to show the tab to the right of the shown tab.

Exit: Click to close the window to unload [Netop Pack'n Deploy](#).

1.3.1 MSI Tab

This is the **Netop Pack'n Deploy** window [Pack](#) selection work panel **MSI** tab:



To create a customized Netop module setup, it must specify the Netop module `msi` file and the directory in which customized setup installation files shall be saved.

Original MSI file [] [Open]: Click **Open** to show an **Open MSI File** window to open a Netop module `msi` file to show its path in the field. You can also drag from Windows Explorer and drop in the field.

Output folder [] [Open]: Click **Open** to show a **Browse for Folder** window to select the folder in which customized setup installation files shall be saved, e.g. a **Pack Output** folder on the desktop, to show its path in the field. You can also drag from Windows Explorer or the desktop and drop in the field.

Note: Until you have specified a valid **Pack** work panel tab.

`pre.cmd/post.cmd`

You can specify command files to be executed before and after the installation file.

1. `setup.exe` (the actual installation process) is called.
2. `OutDir` as the output folder.

or

If you are running Pack'n Deploy from a command line, specify `-i OutDir` as a parameter for Pack'n Deploy.

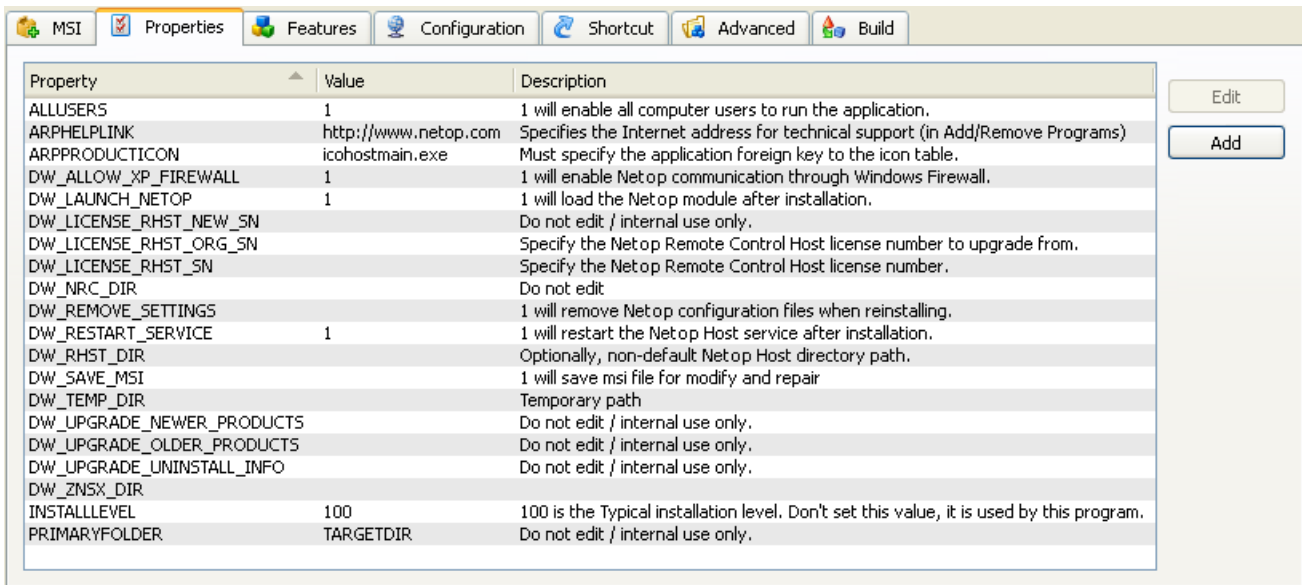
All files in this folder will be copied to the machine you deploy to.

When the installation is complete, all files in the **AltFiles** directory will be cleaned up on the machine you have deployed to.

If you want to keep any of these files on the machine you deploy to after installation, you should add them to the `.mst` file.

1.3.2 Properties Tab

This is the **Netop Pack'n Deploy** window **Pack** selection work panel **Properties** tab:



It specifies the public properties of customized setup installation files in property table records with these column contents:

- **Property:** Property name.
- **Value:** Property value.
- **Description:** Optionally, a property description.

The table can show public Windows Installer properties whose names do not start with DW_ and public Netop properties whose names start with DW_. Private properties that you cannot edit will not be shown. Value options are explained in the table below. Default values are marked with an asterisk.

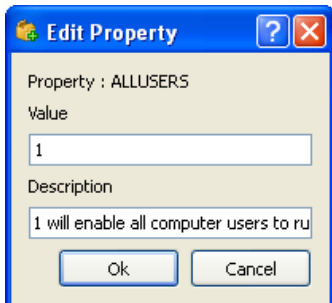
Property	Value Options
ALLUSERS	<ul style="list-style-type: none"> • <None>: No value will remove the ALLUSERS property from the table. Only the installing user can run the application. • 1*: A user with administrator privileges can install the application. All computer users can run the application. • 2: If installed by a user without administrator privileges, only the installing user can run the application. If installed by a user with administrator privileges, all computer users can run the application.
ARPHHELPLINK	Internet address for technical support. http://support.netop.com * is the Support for Netop Remote Control Internet address.
ARPPRODUCTICON	<p>Must specify the foreign key to the Windows Installer icon table, which is the primary icon for the Windows Installer package.</p> <ul style="list-style-type: none"> • icohostmain.exe* is the Netop Host and extended Host foreign key. • icoguest32.exe is the Netop Guest foreign key.

	<ul style="list-style-type: none"> • <code>icostudents.exe</code> is the Netop Student foreign key. • <code>icoteacher.exe</code> is the Netop Teacher foreign key.
DW_ALLOW_XP_FIREWALL	<ul style="list-style-type: none"> • <code><None></code>: Will disable Netop communication through the computer Windows Firewall. • <code>1*</code>: Will enable Netop communication through the computer Windows Firewall.
DW_LAUNCH_NETOP	<ul style="list-style-type: none"> • <code><None></code>: Will not load the Netop module after installation. • <code>1*</code>: Will load the Netop module after installation.
DW_LICENSE_RHST_NEW_SN	Do not edit this property. If you are upgrading installations, it will specify the new Netop module license number generated from the original license number specified below.
DW_LICENSE_RHST_ORG_SN	If you are upgrading installations, specify the original Netop module license number from which a new license number shall be generated.
DW_LICENSE_RHST_SN	Specify the Netop module license number (<code>none*</code>).
DW_NRC_DIR	Do not edit this property that is for internal use only.
DW_REMOVE_SETTINGS	<ul style="list-style-type: none"> • <code><None></code>: Will not remove installed Netop configuration files when reinstalling. • <code>1*</code>: Will remove installed Netop configuration files when reinstalling.
DW_RESTART_SERVICE	<ul style="list-style-type: none"> • <code><None></code>: Will not restart the Netop Host service after installation. • <code>1*</code>: Will restart the Netop Host service after installation to enable any installed or updated Netop Host.
DW_RHST_DIR	You can specify an alternative installed module directory path.
DW_SAVE_MSI	<ul style="list-style-type: none"> • <code><None></code>: Will not save the installed module <code>msi</code> file. • <code>1*</code>: Will save the installed module <code>msi</code> file to make it available for modify and repair.
DW_TEMP_DIR	You can specify an alternative temporary directory path.
DW_UPGRADE_NEWER_PRODUCTS	Do not edit this property that is for internal use only.
DW_UPGRADE_OLDER_PRODUCTS	Do not edit this property that is for internal use only.
DW_UPGRADE_UNINSTALL_INFO	Do not edit this property that is for internal use only.
INSTALLLEVEL	Installable features can be assigned a level from 0 to 32767. A number in the range 1 to 32767 will make features with a lower number except 0 available for installation. 100* is the normal level for a Typical installation.
PRIMARYFOLDER	Must be the key name of a directory that exists in the Windows

Installer directory table. `TARGETDIR*` will typically specify the directory recommended by the manufacturer.

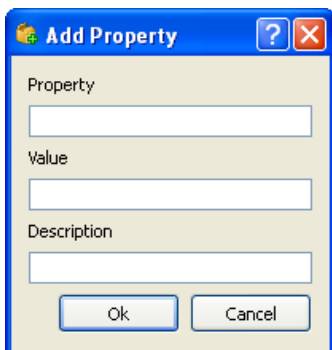
Note: The letter combination `RHST` stands for Netop Remote Control Host. Other letter combinations will appear for other Netop modules.

Edit: Select a record and click to show this window:



- **Property:** Will show the property name.
- **Value []:** You can edit the property value.
- **Description []:** You can edit the property description.

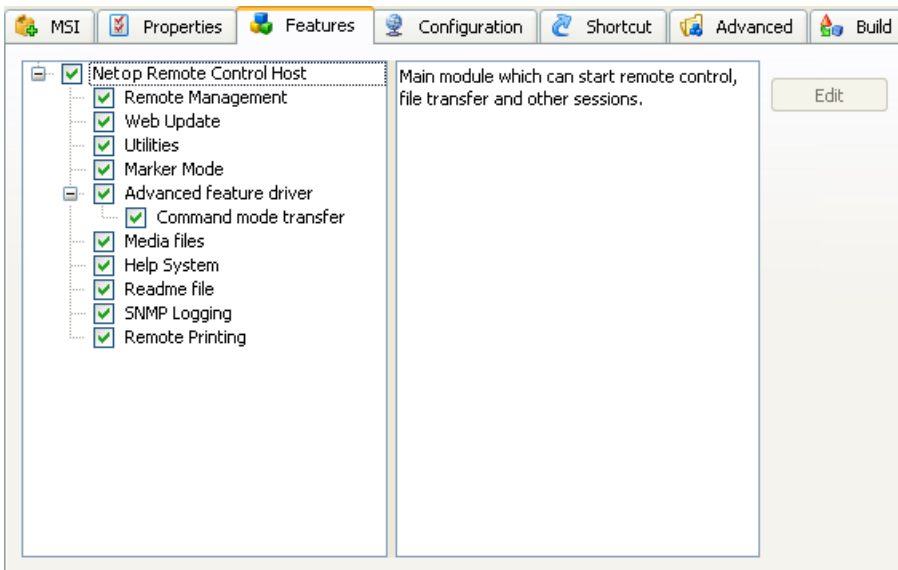
Add: Click to show this window:



- **Property:** Property name.
- **Value:** Property value.
- **Description:** Optionally, a property description.

1.3.3 Features Tab

This is the **Netop Pack'n Deploy** window **Pack** selection work panel **Features** tab:

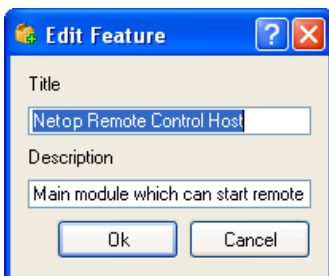


It specifies the features that will be installed from the customized setup installation files.

The left pane will contain a check boxed tree structure of available features. Select a feature to highlight it to show its description in the right pane.

Initially, feature boxes will be checked according to the [Properties Tab](#) `INSTALLLEVEL` property value. Check/uncheck boxes to install/not install features.

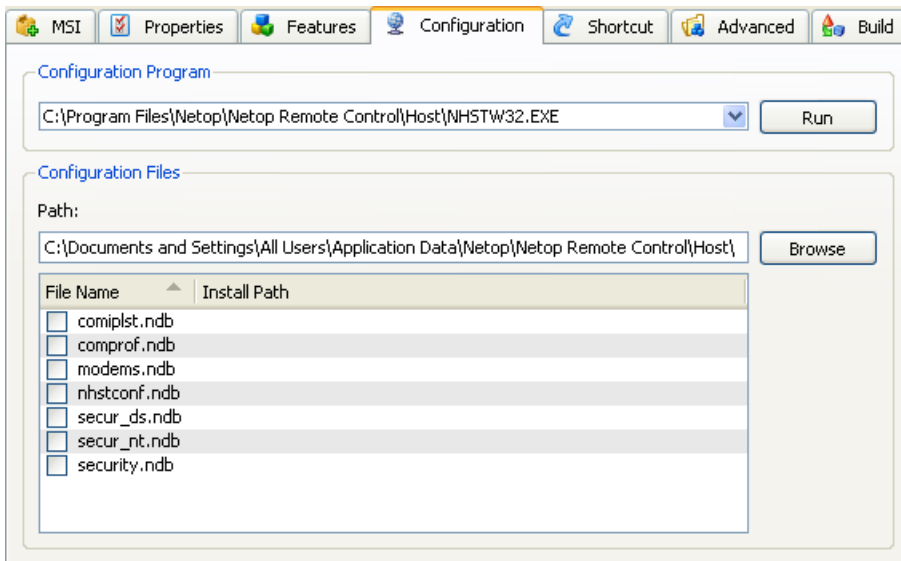
Edit: Click to show this window:



- **Title []:** You can edit the feature title.
- **Description []:** You can edit the feature description.

1.3.4 Configuration Tab

This is the **Netop Pack'n Deploy** window **Pack** selection work panel **Configuration** tab:



It enables replacing selected original MSI file configuration files by the user configuration files of a selected matching Netop module to set up installed modules like the selected module.

Configuration program [] [Run]: To replace configuration files, this field must show the program file path of the Netop module whose setup you want to copy. Click **Run** to run the application to set it up like you want installed modules to be set up.

Note: Netop module setup will be written to user configuration files at unload. Remember to unload the configuration program to write its setup to its user configuration files.

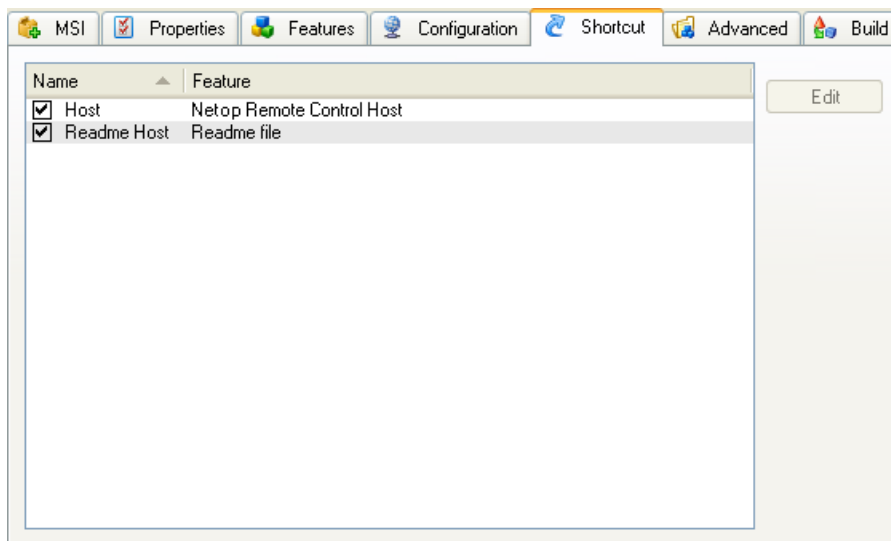
Configuration files [] [Browse] []: This field will initially show the **Configuration program** default user configuration files directory path. If the **Configuration Program** user configuration files do not reside in their default directory path, click **Browse** to show the **Browse for Folder** window to select the actual **Configuration Program** user configuration files directory to show its path in the field.

The table below will contain check boxed configuration file records with these column contents:

- **File name:** Check/uncheck the box to replace/not replace the file.
- **Install path:** If the File name column box is checked, the replacement configuration file path will be shown.

1.3.5 Shortcut Tab

This is the **Netop Pack'n Deploy** window **Pack** selection work panel **Shortcut** tab:

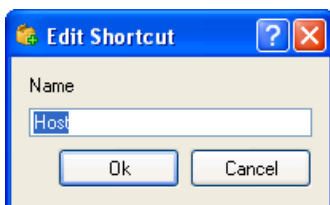


It enables you to edit the installed Netop module program folder shortcuts.

Initially, it will show records of [Original MSI file](#) shortcuts in a table with these column contents:

- **Name:** Checkbox (default checked) and shortcut name. Uncheck/check the box to not create/create the program folder shortcut.
- **Feature:** Name of the [Feature](#) that will be loaded by the shortcut.

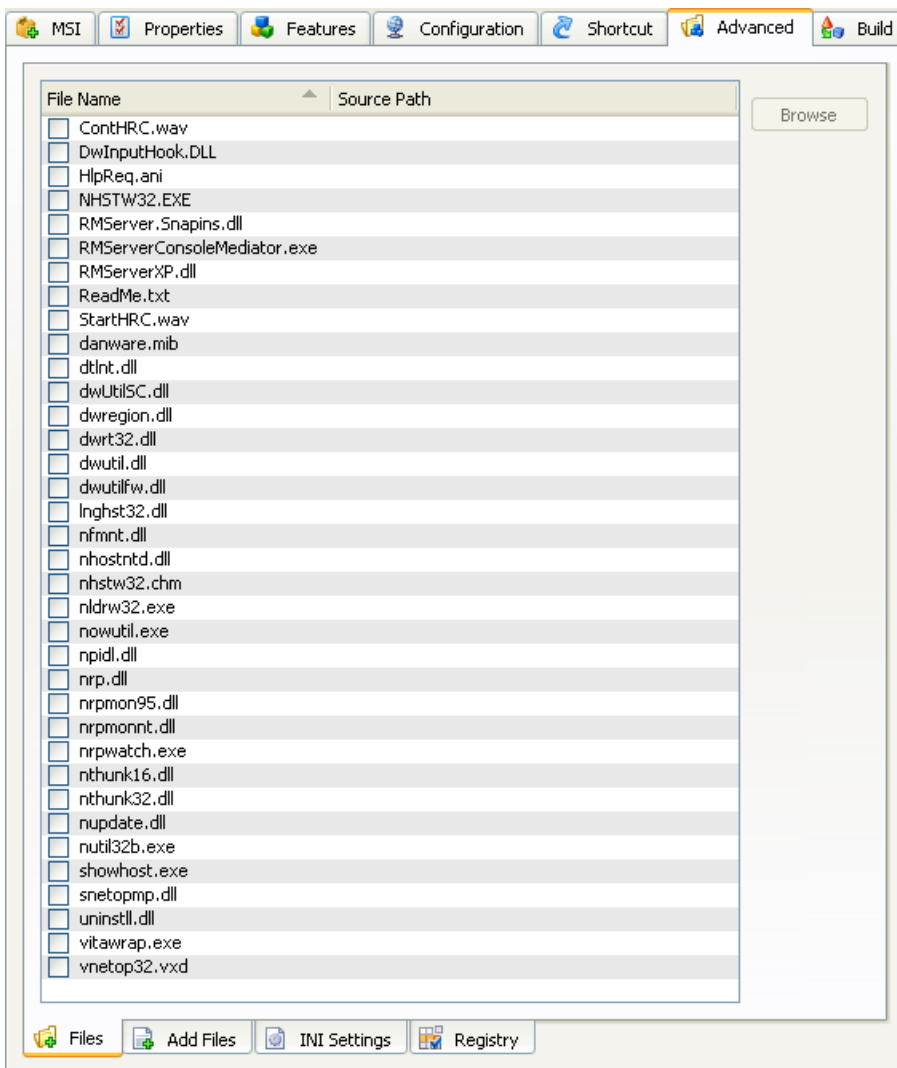
Edit: Select a record and click this button to show this window:



- **Name []:** You can edit the shortcut [Name](#).

1.3.6 Advanced Tab

This is the **Netop Pack'n Deploy** window [Pack](#) selection work panel **Advanced** tab:

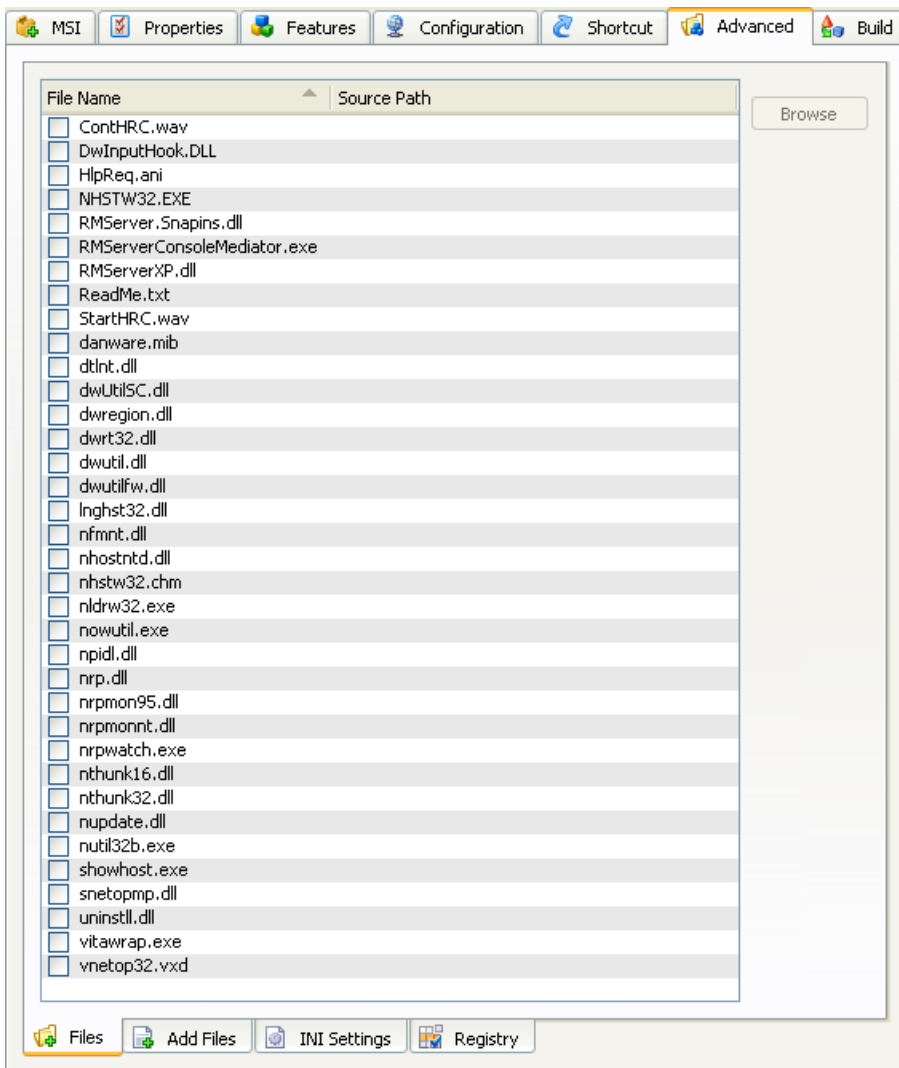


It contains along the lower border of the tab these sub-tabs:

- [Files](#)
- [Add Files](#)
- [INI Settings](#)
- [Registry](#)

1.3.6.1 Advanced Files Tab

This is the **Netop Pack'n Deploy** window **Pack** selection work panel **Advanced** tab **Files** sub-tab:



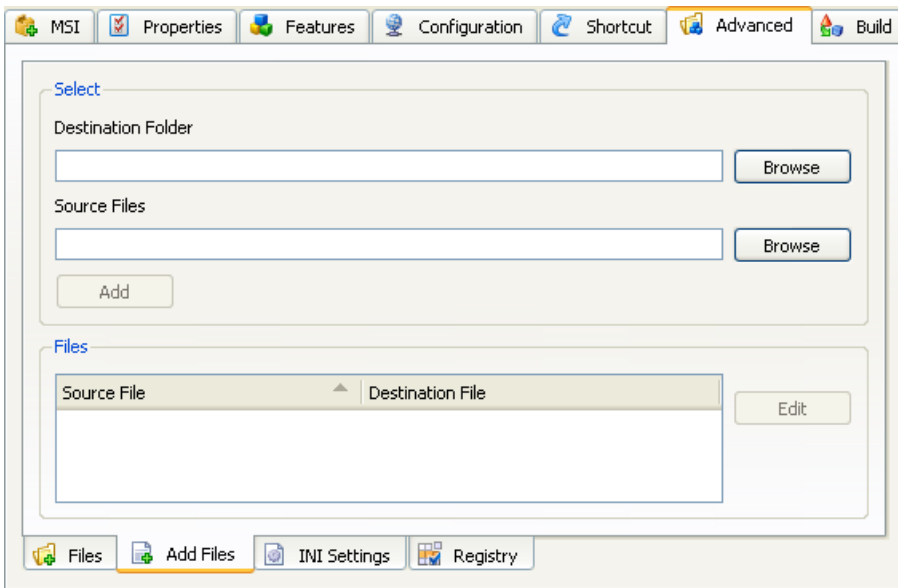
It enables you to replace selected [Original MSI file](#) installed files by specified files.

Its table will contain check boxed records of installed files other than [Feature tab](#) program files and [Configuration tab](#) configuration files with these column contents:

- **File name:** Check/uncheck the box to replace/not replace the file by the [Source Path](#) column file.
- **Source path:** Must show a replacement file source path if the [File name](#) column box is checked, see [Browse](#).
- **Browse:** Select a record and click this button to show a **New Source Path for** <File name> window to open a replacement file to show its path in the [Source Path](#) column cell.

1.3.6.2 Advanced Add Files Tab

This is the **Netop Pack'n Deploy** window **Pack** selection work panel **Advanced** tab **Add Files** sub-tab:



It enables you to add specified files to a customized Netop module setup in these elements:

Select

Destination folder [] [Browse]: Leave empty to copy specified **Source Path** to the folder in which the **Original MSI file** program files will be installed. Click **Browse** to show the **Browse for Folder** window to select a local computer folder to show its path in the field. You can also drag from Windows Explorer and drop in the field. You can edit the destination folder path.

Source files [] [Browse]: Click **Browse** to show a **Source Files** window to open local computer files to show their paths in the field. You can also drag from Windows Explorer and drop in the field. You can edit the field contents to change the file paths.

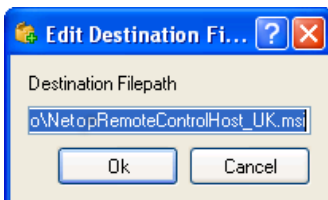
Add: Click this button to add the **Destination folder** and **Source Files** field specifications the to the **Files** section table to empty the **Source Files** field.

Files

The table will contain add file records with these column contents:

- **Source file:** Will contain a check boxed source file path. Check/uncheck the box to add/not add the source file.
- **Destination file:** Will show the destination file path.

Select a record and click **Edit** to show this window:

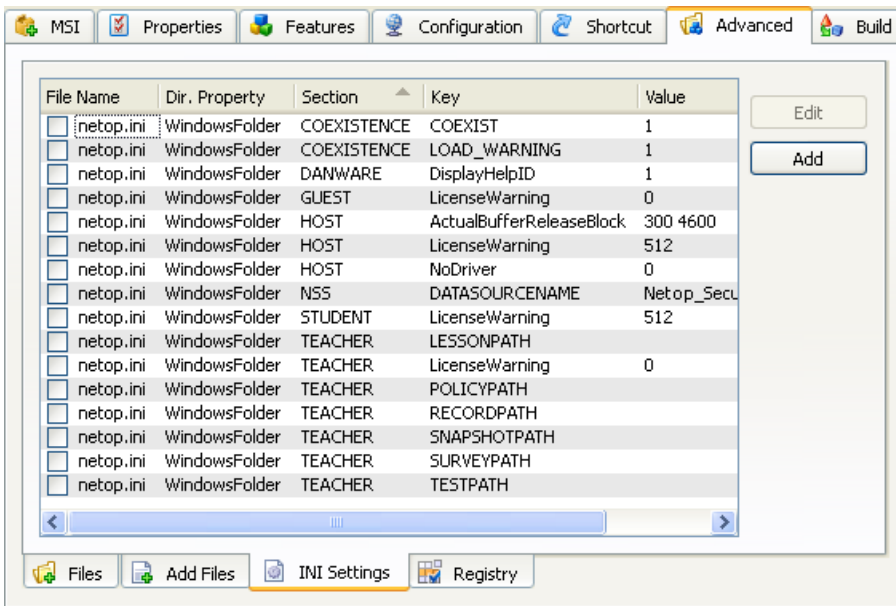


- **Destination file path: []:** You can edit the path to change the destination folder and file name.

Note: If a drive with the **Destination file path** drive designation does not exist on the destination computer, the file will not be added. If other elements of the **Destination file path** do not exist on the destination computer, they will be created. An added file will overwrite an existing file in the same destination computer path.

1.3.6.3 Advanced INI Settings Tab

This is the **Netop Pack'n Deploy** window **Pack** selection work panel **Advanced** tab **INI Settings** sub-tab:

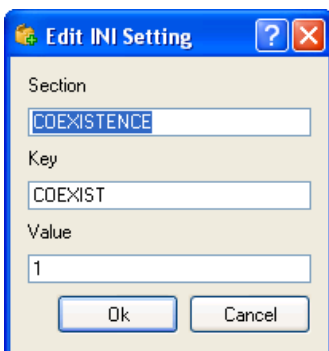


It enables you to add ini file settings to a customized Netop module setup.

Its table will contain check boxed records of local computer Netop.ini file settings with these column contents:

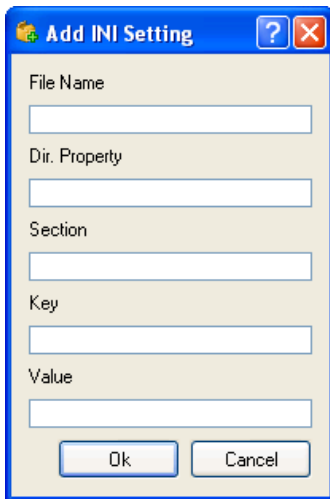
- **File name:** Will show the ini file name. Check/uncheck to add/not add the ini file setting.
- **Dir. Property:** Will show the MSI property of the directory in which the ini file resides.
- **Section:** Will show the ini file section name.
- **Key:** Will show the ini file key name.
- **Value:** Will show the ini file key value.

Edit: Select a record and click to show this window to edit the ini file setting:



- **Section []:** You can edit the [Section](#) name.
- **Key []:** You can edit the [Key](#) name.
- **Value []:** You can edit the key [Value](#).

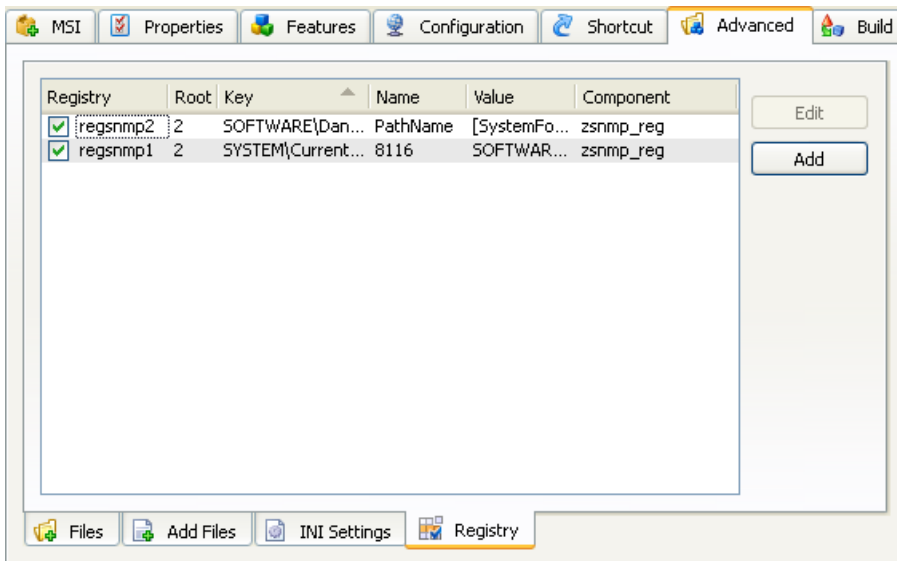
Add: Click to show this window to add an ini file setting:



- **File name []:** Specify the ini [File name](#).
- **Directory property []:** Specify the ini file [Dir. Property](#).
- **Section []:** Specify the [Section](#) name.
- **Key []:** Specify the [Key](#) name.
- **Value []:** Specify the key [Value](#).
-

1.3.6.4 Advanced Registry Tab

This is the **Netop Pack'n Deploy** window [Pack](#) selection work panel [Advanced](#) tab **Registry** sub-tab:



It enables you to change customized setup installation files registry settings.

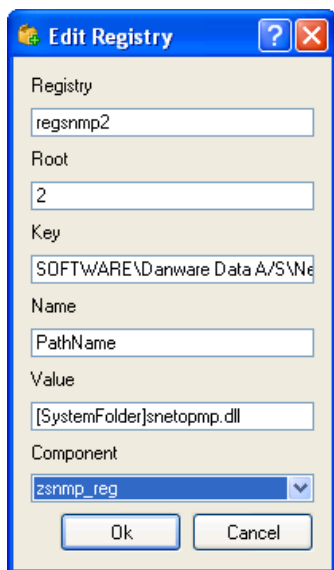
Warning! Do not change registry settings unless you know exactly what you are doing. Manipulating registry settings can corrupt the computer registry to make the computer non-operational.

Its table will contain check boxed records of the registry settings the [Original MSI file](#) will create when installing with these column contents:

- **Registry:** Will show the registry setting name. Uncheck/check to not create/create the setting.
- **Root:** Will show the [Key](#) path specification number of levels from the registry root level.
- **Key:** Key path.
- **Name:** Key property name unless **(Default)**.
- **Value:** Key property value, if any.

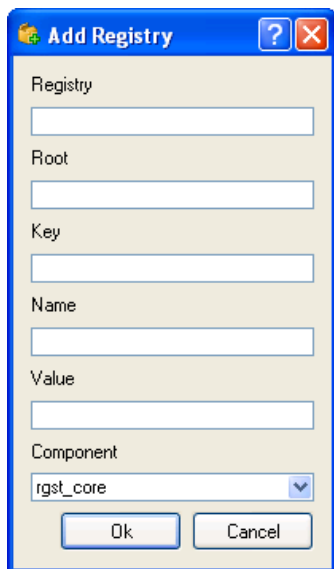
- **Component:** Application component that uses this registry setting.

Edit: Select a record and click to show this window to edit the registry setting:



- **Registry []:** You can edit the [Registry](#) name.
- **Root []:** You can edit the [Root](#) number.
- **Key []:** You can edit the [Key](#) path.
- **Name []:** You can edit the [Name](#) name.
- **Value []:** You can edit the [Value](#) value.
- **Component []:** You can edit the [Component](#) name.

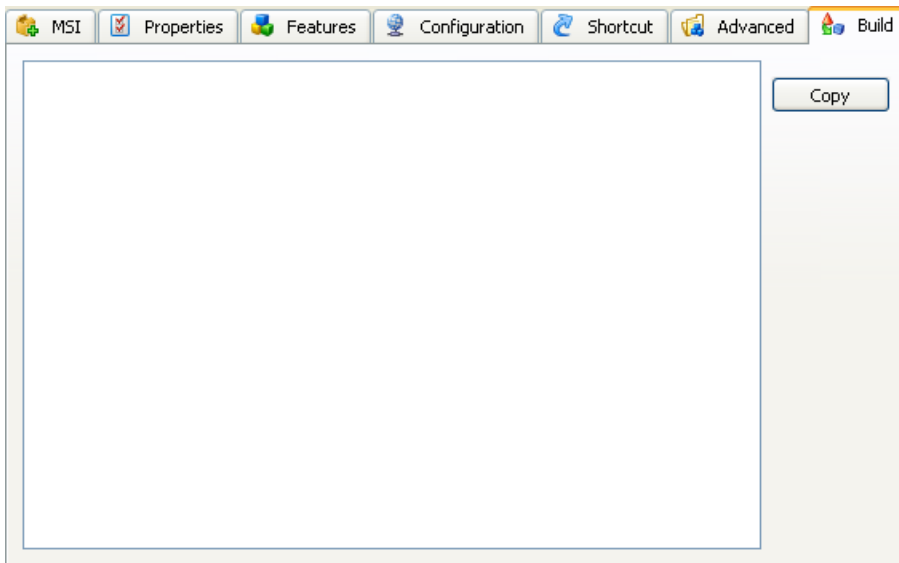
Add: Click this button to show this window to add a registry setting:



- **Registry []:** You can edit the [Registry](#) name.
- **Root []:** You can edit the [Root](#) number.
- **Key []:** You can edit the [Key](#) path.
- **Name []:** You can edit the [Name](#) name.
- **Value []:** You can edit the [Value](#) value.
- **Component []:** You can edit the [Component](#) name.

1.3.7 Build Tab

This is the [Netop Pack'n Deploy](#) window [Pack](#) selection work panel **Build** tab:



It will show a textual account of a build process.

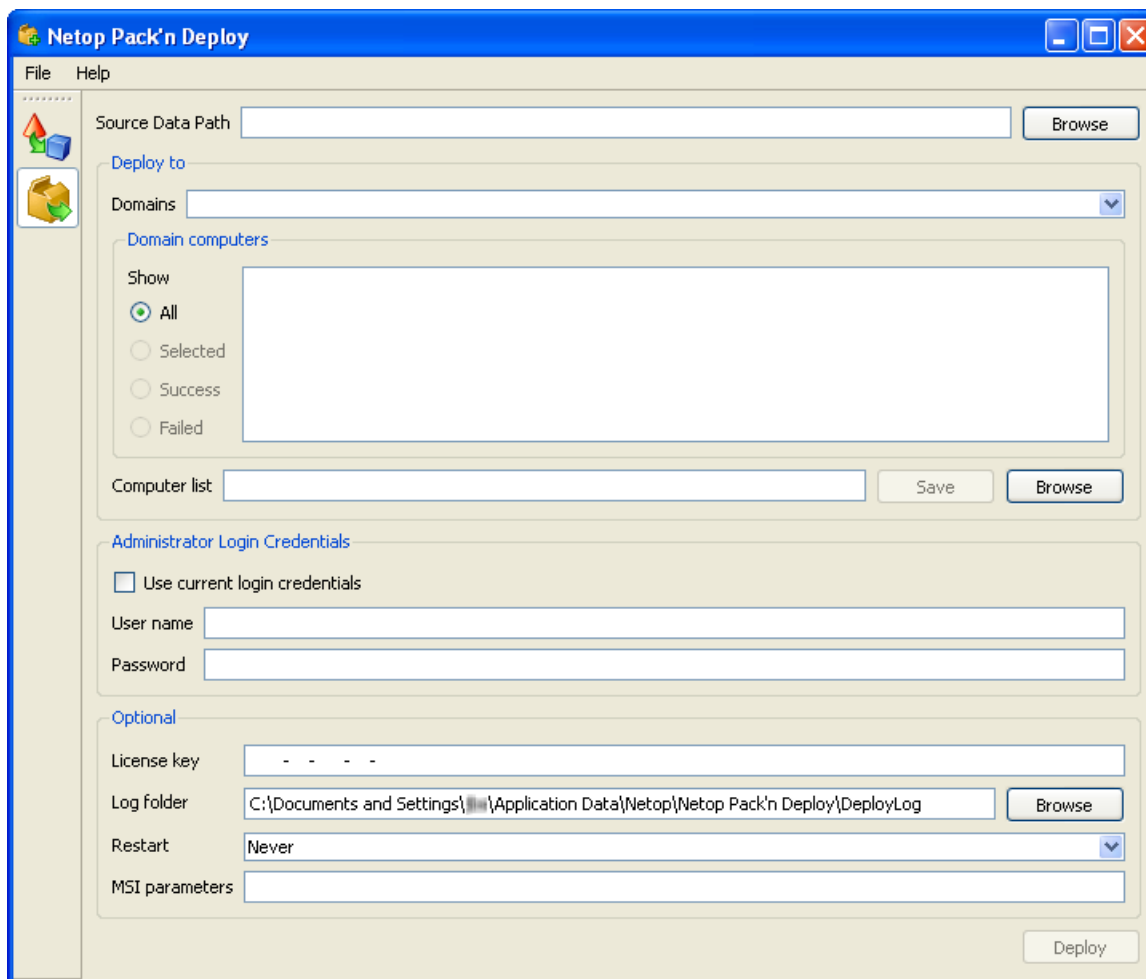
Initially, the pane will be empty. Click **Build** to create customized setup installation files in the **Output Folder** according to your tab specifications to show the textual account in the pane.

Note: After building, the [Output Folder](#) will contain the [Original MSI file](#) and if retrieved from a directory that contains a setup.exe file also this file and an mst transform file. Any __temp... files will be removed when **Netop Packn Deploy** is unloaded.

Copy: Click to copy the textual account to the clipboard.

1.4 Deploy

Click the [Netop Pack'n Deploy](#) window left selection bar [Deploy](#) button to show these window contents:



The right work panel will contain these elements:

- **Source folder path [][Browse]:** Click **Browse** to show a **Browse for Folder** window to select the deployment source folder to show its path in the field. To deploy a **Netop Pack'n Deploy Pack** customized setup Netop module, select its output folder. Otherwise, select a folder that contains the Netop module `msi` file. The first found `msi` file in the folder will be used. Therefore, we recommend that you verify that the folder contains only one `msi` file.

Deploy to

- **Domain []:** Select in the drop-down box list an available domain to show its name in the field and after browsing the names of its accessible computers in the **Domain computers** pane below. Unavailable computer names will show an icon. Available computer names will show an icon. To select computers to deploy to, click available computer names to show an icon.
- Select **All** or **Selected** to show all or only selected computer names in the pane. The two remaining options (**Success** and **Failed**) will be available after deployment.
- **Computer list [][Save][Browse]:** To save a computer selection, click **[Save]** to save the selection in a text file. To apply a saved computer selection, click **[Browse]** to select a text file to show its path in the field and mark available computer names in the pane that belong to the selection with an icon.

Credentials

- **User name:** Installing Netop modules on remote computers will require administrator rights. Specify the name by which the user that installs on remote computers shall be identified.
- **Password:** Specify the password by which the user that installs on remote computers shall be identified.




Optional

- **License key []:** You can specify the license key by which the Netop module shall be installed here or on the [Properties tab](#).
- **Log path []:** Deployment to each remote computer will create a local log file named `<Remote computer name>.log` and if successfully connected to the remote computer a remote log file named `<Remote computer name>.rlg`. These plain text log files will tell what went wrong in a failed deployment. You can specify the directory in which these log files shall be saved. `.\log` means a log directory under the **Netop Pack'n Deploy** directory.
- **Restart []:** Select one of the options **Never**, **If needed** or **Always** to make the remote computer do that after installation.
- **MSI parameters []:** To apply selected Windows Installer parameters to installations on remote computers, specify them in this field. To view available Windows Installer parameters, from a command prompt specify `msiexec`.

Deploy

To execute deployment, click **Deploy**.

Progress will be indicated by these icons replacing pane  icons:

- : Deployment in progress.
- : Deployment ended successfully.
- : Deployment failed. Read logs to identify what went wrong.

1.5 Silent Install

To run Silent Install (Windows Installer) from a directory that contains **Netop Pack'n Deploy** output files, from a command prompt or in the Run window execute this command:

```
<Directory path>:\msiexec /i <Application.msi> TRANSFORMS=<Application.mst>
```

Note: Application represents the original msi file name.

This command will install and set up the Netop module as specified in **Netop Pack'n Deploy** showing normal installation windows.

You can add these optional parameters to the command in any order:

Parameter	Function
/quiet	Quiet mode, no user interaction.
/l* <Log file name>	Creates an installation log in <Log file name>.

Note: To show the full range of `msiexec` parameters, from a command prompt execute the command `msiexec`.

Example:

```
<Directory path>:\msiexec /i NetopRemoteControlHost_UK.msi /quiet /l* setup.log
TRANSFORMS=NetopRemoteControlHost_UK.mst
```

This command will install and set up Netop Remote Control Host from Netop Pack'n Deploy output files in quiet mode logging the installation in a `setup.log` file.

A

- Add INI Setting window 17
- Add Registry window 18
- Advanced Add Files Tab 15
- Advanced Files Tab 14
- Advanced INI Settings Tab 16
- Advanced Registry Tab 17
- Advanced Tab 13

B

- Browse button 14
- Build Tab 19

C

- command files 6
- Component column 18
- Configuration Tab 11

D

- Deploy 20
- Destination folder field 15
- Dir. Property column 16

E

- Edit Destination File Path window 15
- Edit INI Setting window 16
- Edit Registry window 18
- Edit Shortcut window 12

F

- Feature column 12
- Features Tab 10
- File name column 14, 16

I

- Install 2

K

- Key column 16, 17

L

- Load 4

M

- Menu Bar 5
- MSI Tab 6

- mst file 19

N

- Name column 12, 17

P

- Pack 5
- pre.cmd/post.cmd 6
- Properties Tab 7

R

- Registry column 17
- Root column 17

S

- Section column 16
- Shortcut Tab 12
- Silent Install 21
- Source files field 15
- Source path column 14

V

- Value column 16, 17