

Tip: set up and use open enrollment classrooms

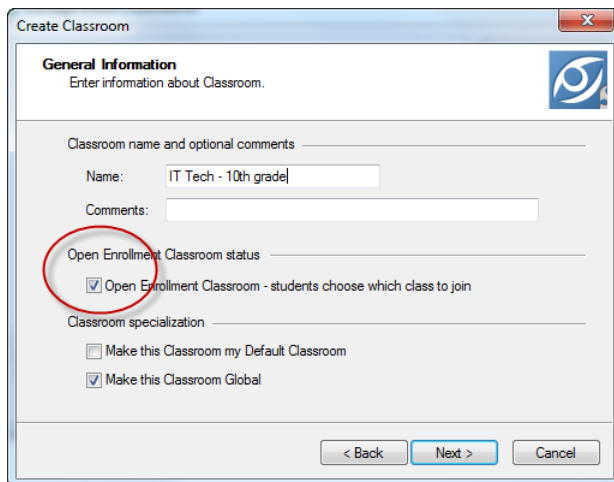
An open enrollment classroom is an alternative to the default static classrooms. Open enrollment allows teachers to send an invitation to join class over the network. Students can accept the invitation and join the classroom at any time without disturbing other students or the teacher.

For details about setup and use, refer to the help file or the [user's guide](#).

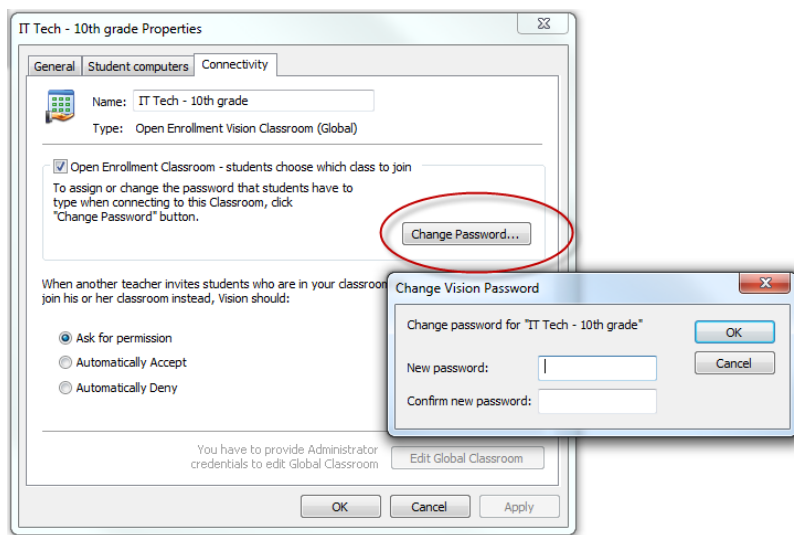
Below is a brief summary with screenshots.

Setting up open enrollment classrooms

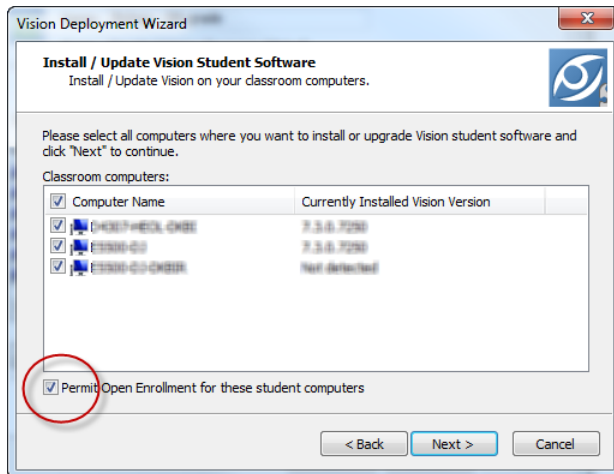
When you create the classroom on the teacher computer, the classroom must be of type "Open Enrollment":



As part of setup, the teacher can set a password that students have to type before being allowed into an open enrollment class:



When you install the student module, each student computer must be set to allow open enrollment:

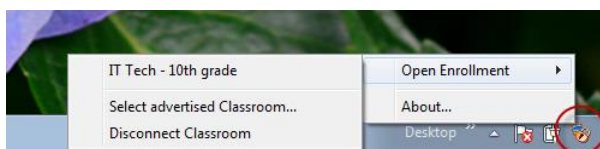


If the student module has already been installed without the option, you can either install again or change from the **Properties** on each student computer (icon must be visible and student settings must be unlocked – set from the **Administration** tab on the teacher computer).

Using open enrollment classrooms

Note: The port 90 (or the port changed from **Vision Preferences**) needs to be open in the Windows Firewall on the teacher computer when using open enrollment classrooms with students connecting from a phone or from the web.

When the teacher starts an open enrollment classroom, each student computer with open enrollment gets an invitation. Students must right-click the icon in the notification area and select the classroom:



If there are more classrooms to select from, they will be in the **Select advertised Classroom** list:

